

Carrier Transicold

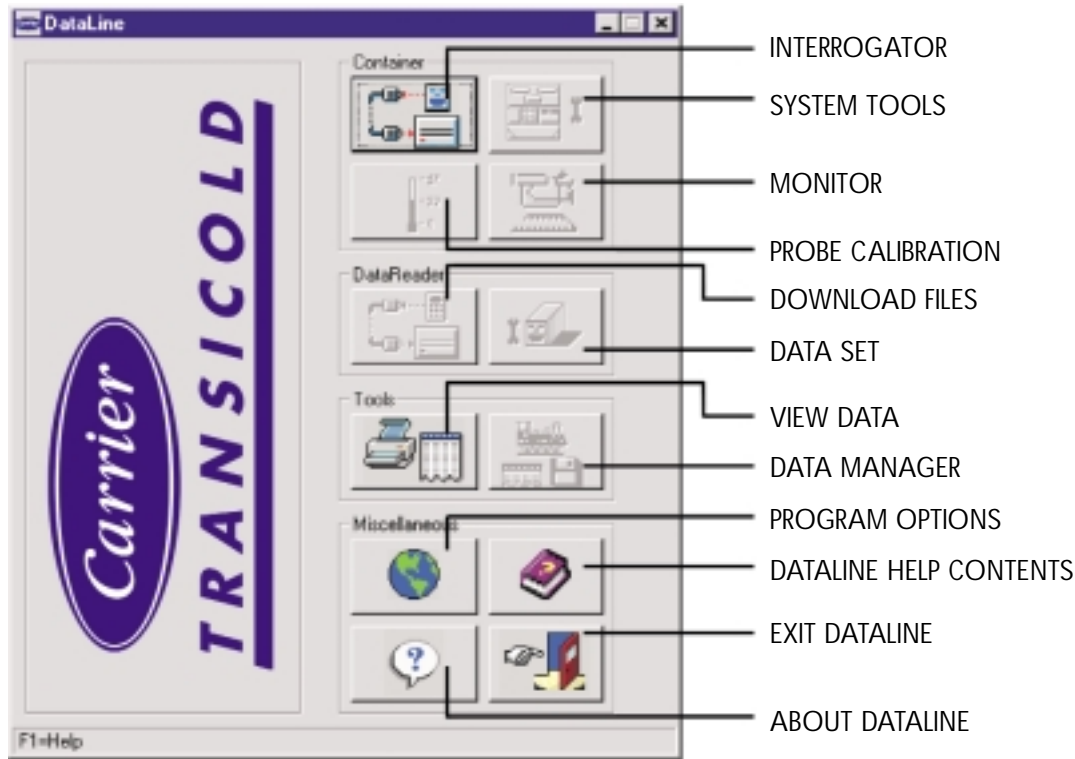
DATALINE™



*THE NEXT
GENERATION
in reefer
diagnostic
SOFTWARE*

DataLINE™ is the next generation in Carrier Transicold reefer diagnostic software.

DataLINE lets you interrogate, configure and monitor the refrigeration unit controller and Datacorder with unmatched precision. It offers many advanced features previously not available in DOS and supports multiple controller platforms including MicroLink 2 and MicroLink 2i. DataLINE provides solutions for service technicians, shippers and marketing personnel alike.



Interrogation

Allows the user to extract information from the refrigeration unit's Datacorder in 4 ways:

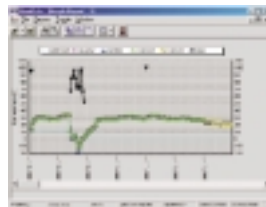
- By Date
- By Trip
- Last 30 Days
- All Data



Advanced Report Features

Text reports may be saved to a standard ASCII formatted file. Eight types of reports can be generated from interrogated data:

- Sensor
- Graphical
- Event
- Pre-trip Summary
- Alarm Summary
- Cold Treatment Summary
- Raw
- Custom - sensor, graphical, alarm, event



System Requirements

- Operates on Windows® 95B, 98 or Windows NT Workstation 4.0® Operating Systems
- PC with an 80486, 100 MHz or higher microprocessor (Pentium® recommended)
- Minimum 8 Mb RAM (16 Mb recommended)
- Internal hard drive with 30 Mb free disk space
- EGA/VGA video graphics
- 3 1/2 " floppy disk drive or CD ROM drive
- One available RS232 serial port
- One available serial, parallel or network printer port

To Order

Call your regional parts depot.
Part number: 07-00421-00

Windows Printer Support

- Print to any printer with an installed driver
- Print preview reports



Carrier

A United Technologies Company

© 2001 Carrier Corporation
A member of the United Technologies Corporation family
Stock symbol UTX
P.O. Box 4805
Syracuse, NY 13221 USA
Printed in the USA 0701